



OtaCLEAN™

Sample Preparation for Ochratoxin A-Analysis

The new LCTech immunoaffinity column OtaCLEAN™ was developed for sample preparation of food for the ochratoxin A analysis using HPLC. The antibody employed possesses a very high ochratoxin A specificity. This leads to exceptional chromatographic results without any interfering secondary signals and very high recovery rates. Independent of the complexity of the matrix, excellent results can be achieved.



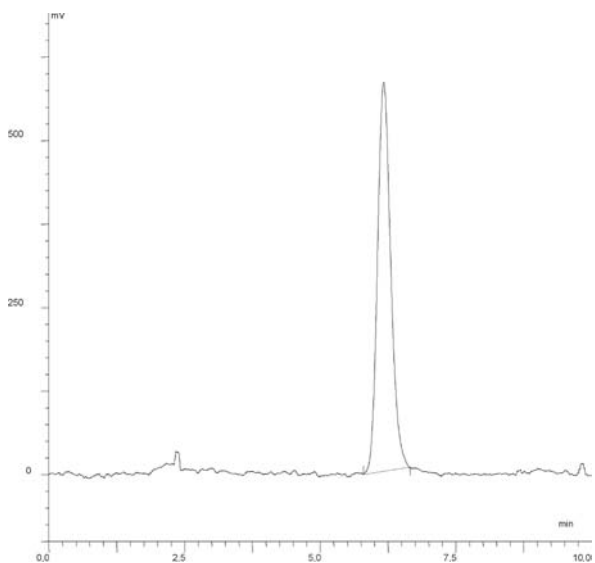
High Recoveries of Ochratoxin A

Matrix	Recovery Rate
Malt	104 ± 3
Nut cream	91 ± 1
Paprika	92 ± 1
Raisins	96 ± 1
Roast coffee	101 ± 9
Red wine	108 ± 1

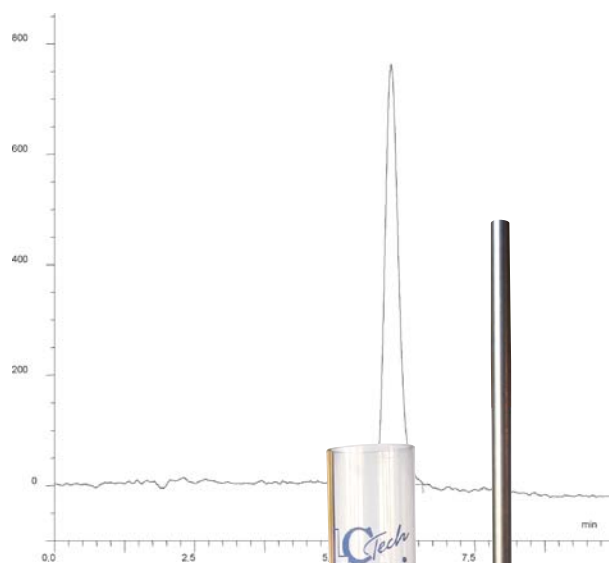
In order to meet quality demands of European and international directives at a consistently high level, extensive controls are undertaken during all production steps.

The column is available in the practical 3 mL polypropylene format. Each 25-pack will contain a quality certificate and protocols for the processing of different matrices.

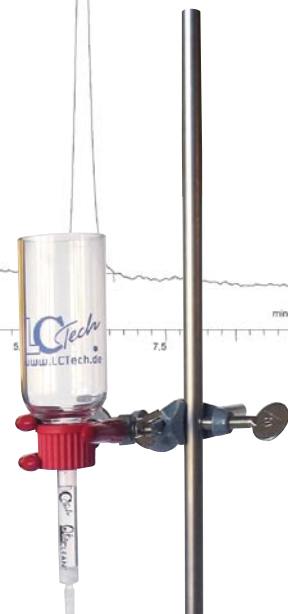
Chromatograms of a 5ng-spiked roast coffee and a 5ng-spiked malt sample, respectively, after processing via an OtaCLEAN™ column (RP-HPLC, post-column derivatization using the Pickering system and fluorescence measurement). Coffee was processed following an LCTech-method with solvent distribution and malt was processed without.



Roast coffee



Malt



Ordering Information:

Immunoaffinity Column OtaCLEAN™
(25 columns/Box); with batch certificate
Part No. 10515

Sample reservoir 120 mL; DURAN® glass,
labwasher-proof; reusable, includes screw
caps and seals
Part No. 10896

Clamp; 3 fingers with rubber
(for usage with reservoir)
Part No. 10081



www.lctech.de

www.lctech.de